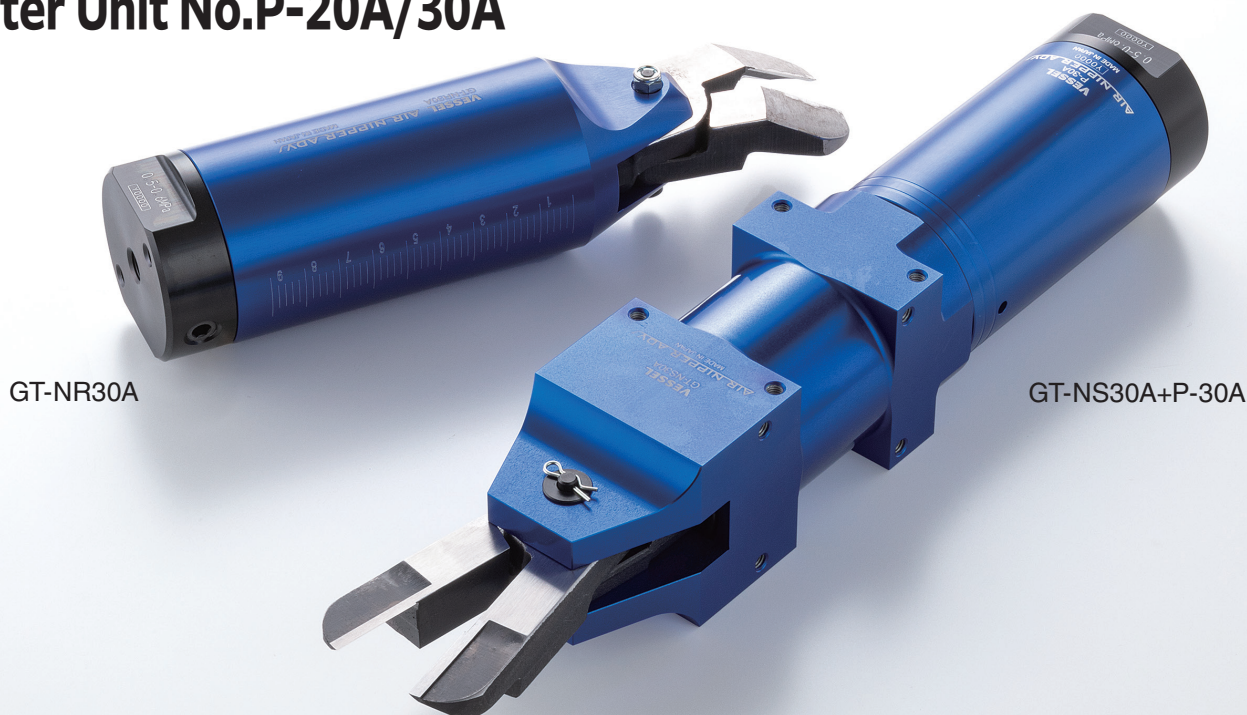


New

VESSEL

Think Solutions!

Air Nipper Round Type without Lever ADV No.GT-NR20A/NR30A Air Nipper Square Type ADV No.GT-NS20A/NS30A Booster Unit No.P-20A/30A



GT-NR30A

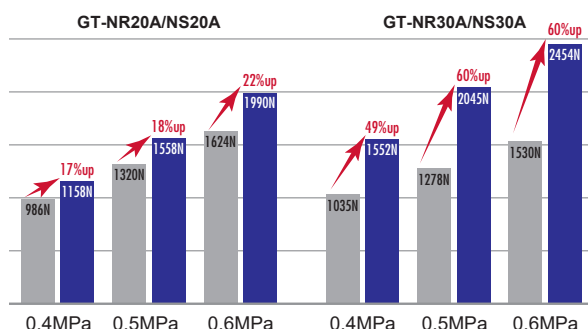
GT-NS30A+P-30A

Enhanced line-up of high power ADV series!

Newly developed from the market requests.

Pressurized force is increased by 20%. Recommended to make equipment lighter and smaller.

Compared to the existing model, the 20 type is about 20% and the 30 type is about 50% more powerful. This has been realized by review of the internal structure and by the new design of the piston and the inside diameter.



Dimensions are same as the existing model.

It is easy to replace the existing model with this new product.
Corresponding to the trend of hardening of the resin products and the larger diameter of the gate, without changing the current jig.

Note: Since the internal structure of this new nipper is different from the existing model, parts are not interchangeable between them. Also, some custom-made blades may have insufficient blade opening or premature wear.

The blade that you have for the existing model can be used.

The standard blades can be used as the replacement blade, as long as the nipper has the same capacity.

Booster unit also available.

Dedicated option for the demand of more powerful cutting force. By attaching the booster to the ADV series, the pressurized force is even further increased by about 20%, compared to the existing models.

Scale is a convenient reference when using with a stand.

The NR series has the scale that is convenient when using with a stand. The scale is printed by a laser on the lateral side and a good reference for installation.

Recommended to the following cases:

- ▶ You want to make the nipper **as light as possible** without using a pressure booster unit.
- ▶ The cutting capacity of the current model (NR20, NS20, NR30, NS30) is **a little insufficient**.
- ▶ The upper capacity nipper type would be appropriate, but could not be used **due to space limitations**.
- ▶ The cutting capacity is sufficient, but **the air pressure needs to be lowered**.
- ▶ Applications that **require pressurization**, such as crimping, punching, bending, etc.

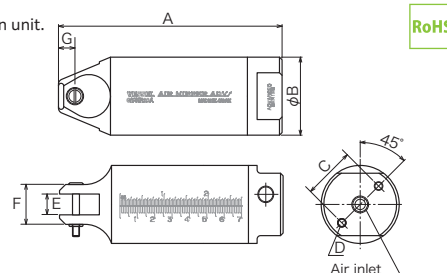
Air Nipper ADV Series Booster Unit No.P-30A/20A

VESSEL
Think Solutions!

Air Nipper Round Type ADV *New*

GT-NR20A/30A

- The nipper that has about 20% more pressurized force than the existing NR series.
- The air inlet position can be adjusted 180 degrees, so it can be changed freely according to the mounting position of the main unit.
- Scale is on the lateral side.
- Blades are OPTION.



Reference

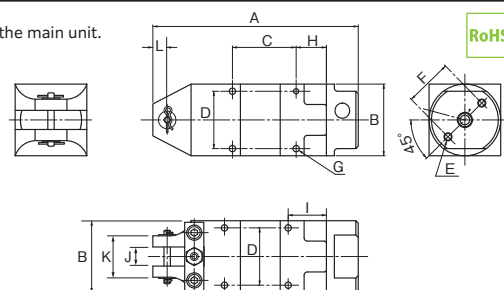
Capacity φ(mm)				Code No.	Model No.	Size (mm)							Air Consumption (cm ³ /str.)	Air Pressure (MPa)	Weight (g)	Hose Coupling	JAN (4907587)
Soft Plastic	Hard Plastic	Copper Wire	Steel Wire			A	B	C	D	E	F	G					
8.0	5.5	3.0	2.4	360027	GT-NR20A	129	45	30	M5 Depth 12	12	23	9.5	262	0.4~0.6	269.5	Rc 1/8	034700
11.0	7.0	4.5	3.0	360028	GT-NR30A	165	56	30	M6 Depth 12	17	30	10.5	648	0.5~0.6	496.0	Rc 1/8	035158

※The capacity is for reference only, when mounting a standard blade. Subject to the blade type and the material of the product to cut.
 ※Make sure in advance of the product dimensions for installation to dedicated or automated machine. (Frame outer dimension, screw size, distance between screws, etc.)
 ※Working air hose inner dia.: 5mm ※Overall length and Weight: Accessories not included.

Air Nipper Square Type ADV *New*

GT-NS20A/30A

- The nipper that has about 20% more pressurized force than the existing NS series.
- The air inlet position can be adjusted 180 degrees, so it can be changed freely according to the mounting position of the main unit.
- Blades are OPTION.



Reference

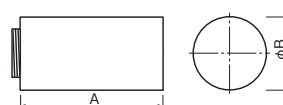
Capacity (mm)				Code No.	Model No.	Size (mm)												Air Consumption (cm ³ /str.)	Air Pressure (MPa)	Weight (g)	Hose Coupling	JAN (4907587)
Soft Plastic	Hard Plastic	Copper Wire	Steel Wire			A	B	C	D	E	F	G	H	I	J	K	L					
8.0	5.5	3.0	2.4	360029	GT-NS20A	129	45	40	36	M5 Depth 12	30	M4 Depth 7	19	24	12	26	9	262	0.4~0.6	366.0	Rc 1/8	035165
11.0	7.0	4.5	3.0	360030	GT-NS30A	170	56	60	46	M6 Depth 12	40	M5 Depth 8	20	30	17	36	15	648	0.5~0.6	686.0	Rc 1/8	035172

※The capacity is for reference only, when mounting a standard blade. Subject to the blade type and the material of the product to cut.
 ※Make sure in advance of the product dimensions for installation to dedicated or automated machine. (Frame outer dimension, screw size, distance between screws, etc.)
 ※Working air hose inner dia.: 5mm ※Overall length and Weight: Accessories not included.

Booster Unit *New*

P-20A/30A

- The booster unit that has about 20% more pressurized force than the existing P series.
- For the application that the originally expected pressurized force cannot be obtained because of the limit of the space and the air pressure.



Reference

Capacity (mm)				Code No.	Model No.	Size (mm)		Air Consumption (cm ³ /str.)	Air Pressure (MPa)	Applicable Nippers	Weight (g)	JAN (4907587)
Soft Plastic	Hard Plastic	Copper Wire	Steel Wire			A	B					
9.0	6.5	3.4	2.6	360055	P-20A	87	45	538	~0.5	NS20A, NR20A	164	034717
14.0	8.0	5.5	4.5	360056	P-30A	92	56	744	~0.5	NS30A, NR30A	266	035189

※The capacity is for reference only, when mounting a standard blade. Subject to the blade type and the material of the product to cut. The total length and the weight will be the sum of the one of the nipper and the booster unit that is attached.

Cautions

- Do not touch the blade.
- Always wear protective goggles and earplugs when working with the product.
- When installing or replacing blades or the nipper, be sure to shut off the power source.
- Do not use the product if any abnormality such as cracks, chipping, abrasion, or deformation is found.
- Do not use the product in which electricity is running.
- The product may cause vibration.
- Do not modify the product.

VESSEL Co., Inc.

17-25, Fukae-Kita 2-chome, Higashinari-ku, Osaka 537-0001 JAPAN
 Tel: +81(0)6 6976 7778 Fax: +81 (0)6 6972 9441
 URL: www.vessel.co.jp/english E-mail: export@vessel.co.jp

VESSEL EUROPE

contact@vessel-europe.com
 www.vessel-europe.com

Distributed by

24060600.00

●Specifications, dimensions, and others may be subject to change without prior notice.