



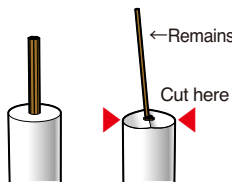
VESSEL Air Nippers for all your needs (3)

VESSEL has solved users' problems. Here are some examples of our solutions.

Problem #1

A part of the thin wires remains uncut.

Workpiece: CR rubber covering $\Phi 6.8\text{mm}$ +
Copper wire $0.45 \times 7\text{pcs}$.
Blade that was used: Blade for plastic



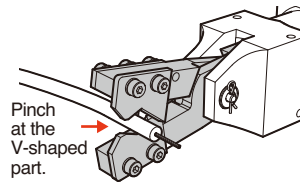
Causes:

Because of the very thin size of the copper wire and the rubber covering, a standard nipper blade cannot cut the wires to the end and leaves some uncut.

Our Solutions

Custom-made V-shaped blade

Nipper: GT-NS20
Custom-made blade: N20VHAB[***]

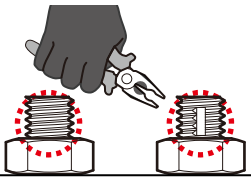


The V-shaped upper and lower blade edges pinch the covering so as not to let it escape and cut the wires securely as the blade edges slide each other.

Problem #2

Desired to prevent the screw from being loosen.

Workpiece: M6 bolt (iron)
Blade that was used: Blade for crimping



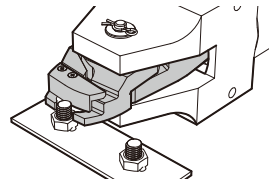
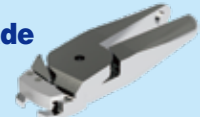
Causes:

The screw threads are crushed by hand with pliers. With human hands, it requires a strong grip, and the crushing process is unstable. Can't we do it with air nippers?

Our Solutions

Custom-made crimping blade

Nipper: GT-NS30
Custom-made blade: N30CI[***]

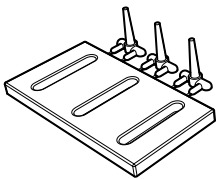


The GT-NS30 is selected in consideration of applied pressure. The cutting edge is a rounded type of the crimping blade. A stopper is attached so that the blade can crush the threads at the certain place.

Problem #3

Many gates at narrow intervals.

Workpiece: Cyclic olefin polymer $3 \times 1\text{mm}$, 6 gates to cut
Blade that was used: Blade for plastic



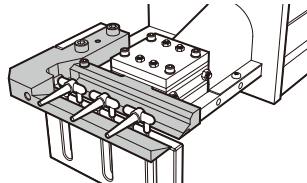
Causes:

Many gates at narrow intervals. Vertical slide nippers cannot be used side by side against the workpiece. Need to cut cleanly with heat nippers to keep the high transparency of the resin.

Our Solutions

Custom-made heat nipper

Custom-made nipper: NKH100XL-80-***
Custom-made blade: 100mm width



Custom-made 100mm-width thrust cut type heat nipper. By cutting while melting the plastic at temperature of $140 \sim 150^\circ\text{C}$, cutting resistance is reduced and the workpiece cracking is prevented. The workpiece is inserted from the side of the blade opening.



Quotation is free.

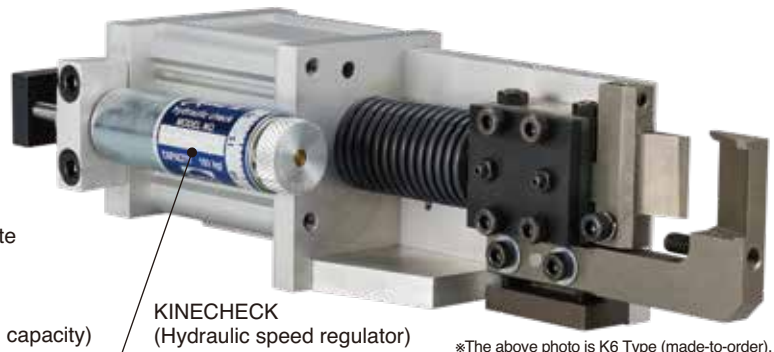


Can cut your workpiece on request.

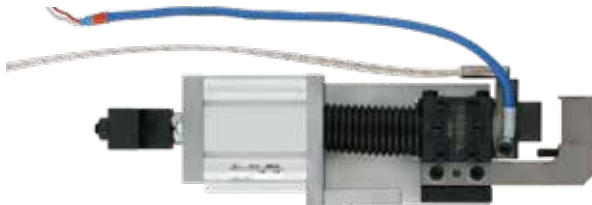
If you cannot find a suitable blade for your work among the standard blades, we will design and manufacture a blade to your specifications. We will provide you with approval drawings and pricing after discussing model selection and blade design. Please contact us at the address listed on the reverse side of this page.

Air Heat Nippers *New* (Thrust Cut Type: w/KINECHECK)

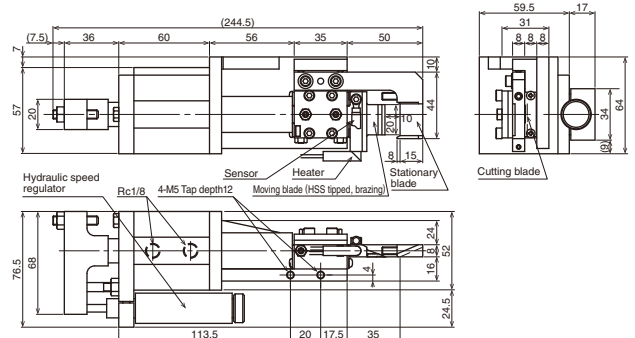
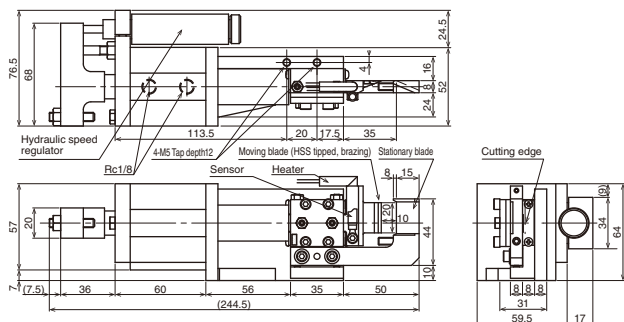
- No hydro-converter or controller is used, so it can be used simply by connecting an air hose. No oil adheres to the workpiece.
- Cutting speed limit can be adjusted with the dial on KINECHECK.
- PTFE-plated blade for excellent durability and the melted workpiece does not tend to adhere to the blade edges.
- HSS tipped (brazing) for increased durability.
- The blade can be easily removed from the cylinder set, making blade replacement easier than with conventional model.
- Symmetrical models are available. Easy to design gate cutting machines.
- Suitable for ultra-high precision cutting applications such as optical resin lenses.
- The change in the blade length or the cylinder (cutting capacity) is available by made-to-order.



《NKH20XLK0-40W》



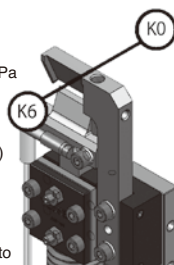
《NKH20XRK0-40W》



Code No.	Model No.	Cutting Capacity: Acrylic (mm)	Blade edge temp. (MAX °C)	Air consumption (cm³/str.)	Piston stroke (mm)	Body weight (g)	JAN (4907587)
—	NKH20XLK0-40W NKH20XRK0-40W	Thickness 1.5 x Width 10	180	approx.118	10	1310	—

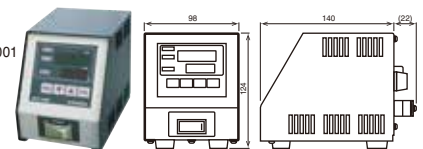
※Heater and sensor are not included in the weight.

- Blade (accessory): Material: Special alloy steel, knife type (for plastic), Blade opening: 10mm, Effective length: 20mm, Weight: 125g
- Working air hose inner dia. ...4mm • Working air pressure ...0.6MPa
- Heater (accessory): HTL-28.5-6.25-300L-80W1H (80W/100V) Recommended operating temp.: 140°C, Cord length: 300mm, Weight: 13g
- Temperature sensor (accessory): SNO-300L-H (K thermocouple) Recommended operating temp.: 140°C, Cord length: 300mm, Weight: 7g
- Made-to-order: Change in blade length and cylinder (capacity), Heater for 200V·220V·240V, Mounting position change of KINECHECK (Standard K0) ※See the right illustration for where to mount.



Option

- Temperature controller: DTC-001



Temperature Range Thermocouple K (°C)	Power Supply (VAC)	Power Consumption (with 100 VAC input)	Protection Fuse (A)	Weight (g)
0~200	100~240	3W or 5VA	15	900

VESSEL Co., Inc.

17-25, Fukae-Kita 2-chome, Higashinari-ku, Osaka 537-0001 JAPAN
Tel: +81(0)6 6976 7778 Fax: +81(0)6 6972 9441
E-mail: export@vessel.co.jp URL: www.vessel.co.jp/english/

VESSEL EUROPE

contact@vessel-europe.com
www.vessel-europe.com

Distributed by