

Compliant with IEC61340-4-1

## Easy to check the surface resistance of floor mat

All necessary for 4 types of measurement in one package.

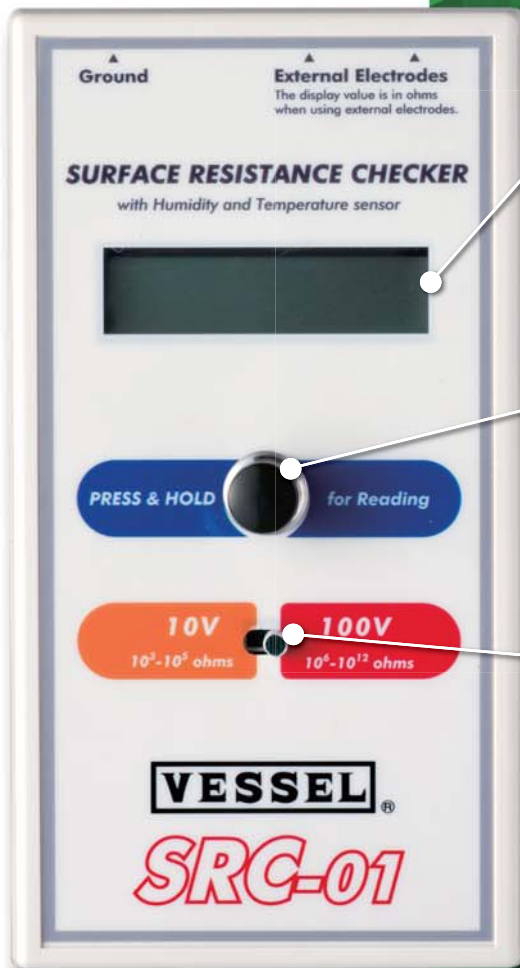


**NEW**

**STAT·CLEAN**

**SRC-01**

# Easy to check surface resistance of floor or mat



## ● Temperature and humidity are measurable

This product can also measure temperature/humidity at the same time as a surface resistivity value.  
(The value of the temperature or humidity is for reference.  
The accuracy is not assured.)

## ● Easy measurement

Press long the measurement button switch, and then the measured value is shown on the display.  
Auto-off function is available to reduce the battery drain.  
(Taking hands off the switch, the power is off in 20 seconds.)

## ● Wide measurement range for the resistance value

The applied voltage selector enables to measure the resistance for the range of (1)  $1.0 \times 10^3$  to  $1.0 \times 10^6 \Omega$  at 10V position and (2)  $1.0 \times 10^6$  to  $1.0 \times 10^{12} \Omega$  at 100V position.

## ● A slim and compact body

The body weight is 340g, including one 006P square-type battery.

## Detail of the package



## ● With a carrying case

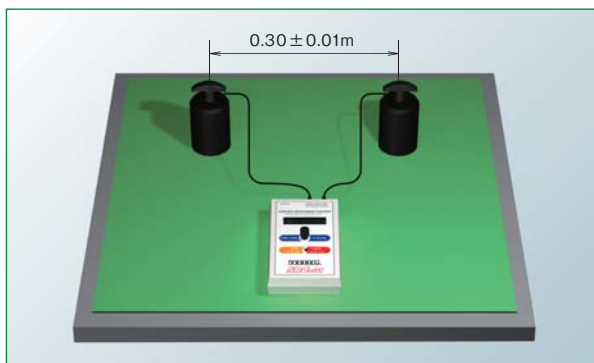
Useful to carry all necessary items for measurement

## ● With probes

Probes based on the IEC 61340-4-1 standard are included, and can measure point-to-point resistance, resistance to ground, and volume resistance.  
The body is also enough on its own to measure surface resistivity as this is with a parallel electrode on the backside. (Parallel electrode of the main body back side)

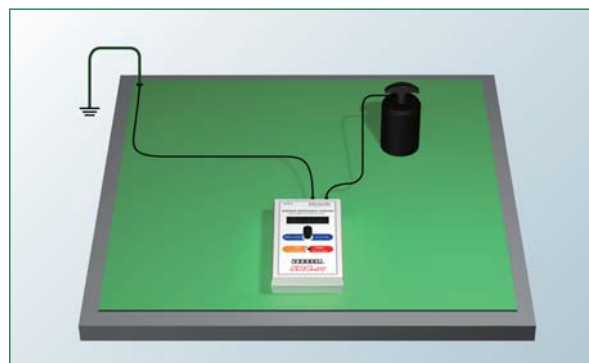
# All-in-one package for various purposes.

The following 4 types of measurement can be performed.



## Resistance between 2 points on a surface

Surface resistance between two points on mats, floors, etc. can be measured.



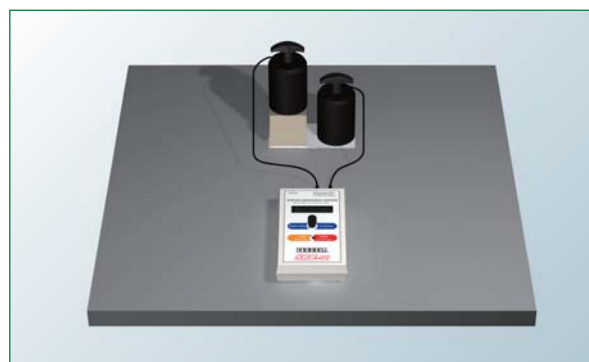
## Resistance between a ground and a connecting point by a probe on a surface

Surface resistance between the electrode and the ground point of a mat, floor, etc. can be measured.



## Surface resistivity

Surface resistivity of mats, floors, etc. can be measured.



## Volume resistance

Volume resistance of chairs, desks, etc. can be measured.

## Detail of the display

When measuring, press and hold the measurement button switch.

LCD display ①

Please hold...

In measuring

LCD display ②

Please hold...  
62.0%RH 26.0 °C

Humidity and temperature are displayed. Continue to press and hold because the resistance has not been measured.

LCD display ③

2.71 e07 ohms/sq  
62.0%RH 26.0 °C

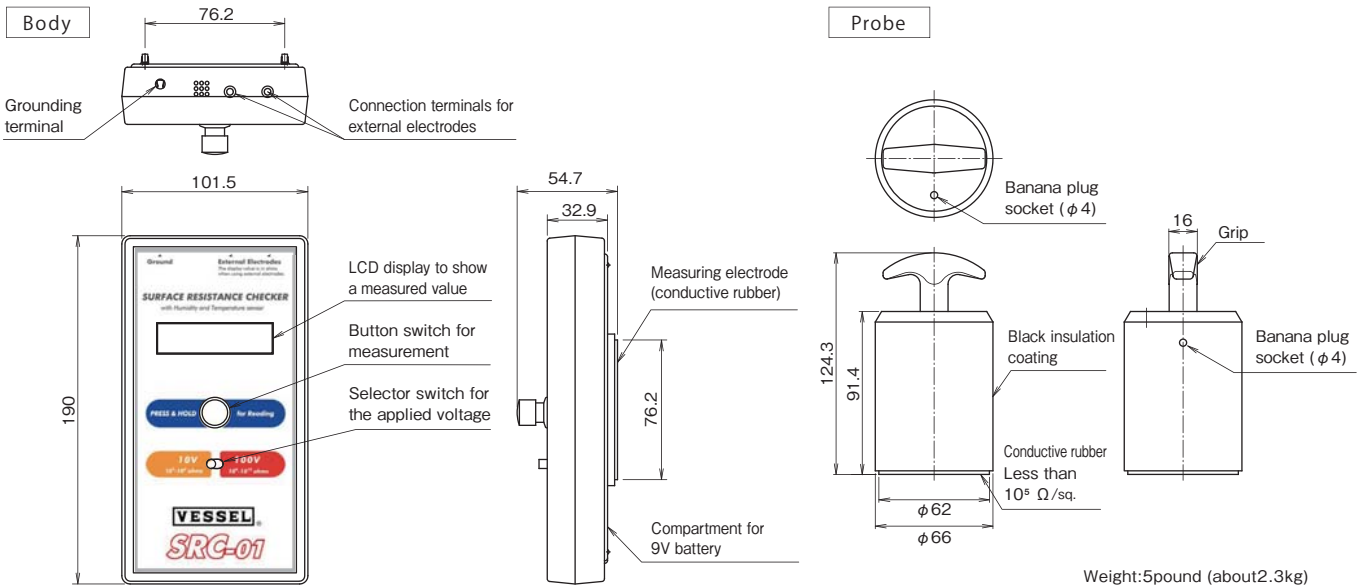
The resistance is displayed. The power is automatically turned off in 20 seconds after taking your hands off the button switch.



※ The measurement may take ten seconds or more depending on the resistance value.



## Dimensions and part names



## Specifications

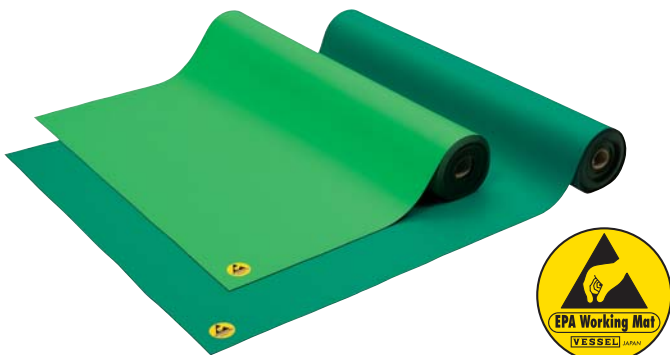
|                                    |  |
|------------------------------------|--|
| Conformity standards               | IEC61340-4-1, JIS-C2170  |
| Measurement range                  | 10 <sup>3</sup> ~10 <sup>12</sup> Ω (Ω/sq.)  |
| Applied voltage                    | 10V (R<1.0×10 <sup>6</sup> Ω or Ω/sq.), 100V (R≥1.0×10 <sup>6</sup> Ω or Ω/sq.)                      |
| Display                            | Triple-digit LCD (□.□□ e□□) ex.: 3.14 e10 → 3.14×10 <sup>10</sup>                                    |
| Power source                       | 9V battery × 1 (Type: 006P, recommended alkaline battery)  |
| L×W×D                              | 190 (L)× 101.5 (W) × 54.7 (H) [mm]   |
| Weight                             | Body: around 340g (including a battery),<br>gross weight: around 6.2kg (including the carrying case) |
| Operating temperature and humidity | 0°C~37°C, 10%~90%RH  |
| Material                           | Body case: ABS resin   |

|             |   |
|-------------|---|
| Accessories | Probe (outer diameter: about Φ66 mm, about 2.3 kg): 2   |
|             | Curled cord for a body earth (banana plugs at both ends): 1   |
|             | Curled cord for measurement for the point-to-point resistance and resistance to ground (banana plug/mono plug): 2   |
|             | Crocodile clip: 1, Large crocodile clip: 1  |
|             | Stainless plate (185 mm x 100 mm): 1  |
|             | Stainless plate: 1  |
|             | Carrying case: 1  |
|             | 9V battery (006P type: manganese dry battery): 1<br>*The accompanying battery is a sample. It may have run down soon after purchase. Thank you for getting a new battery by yourself. |
|             | Manuals   |

\*The indication (Ω/□) in the above table is shown as (Ω/sq) in the checker display. \*An inspection report and a calibration certificate available as option. Please consult us for more detail.

## EPA Working Mat · Conductive Rubber Mat

Controlling electroconductivity to 10<sup>6</sup>Ω or more 10<sup>7</sup>Ω or less without influence from the working environment Ideal for workbenches requiring static electricity measures on backing

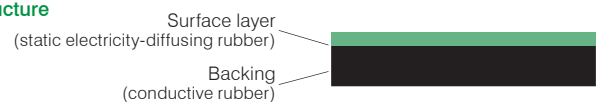


**10m ROLL**  
**LG-100** EDP No.:621464  
**SG-100** EDP No.:621461

- ▶ Offers uniform, consistent conductive performance.
- ▶ Features a matte surface finish, reducing reflections and helping prevent eye fatigue prevention.
- ▶ Heat resistant to dropping solder.

| Applications                       | Conductivity                            | Material | Directive       |
|------------------------------------|---|----------|-----------------|
| Designed for use with work benches | 10 <sup>6</sup> ≤ R ≤ 10 <sup>7</sup> Ω | NBR+SBR  | <b>EPA RoHS</b> |

### Structure



### Common Specifications

| Model No.    | LG-100                                  | SG-100                                  |
|--------------|---|---|
| Color        | Light green                             | Green                                   |
| Size         | W1.0m×L10m×t2.0mm                       | W1.0m×L10m×t2.0mm                       |
| Conductivity | 10 <sup>6</sup> ≤ R ≤ 10 <sup>7</sup> Ω | 10 <sup>6</sup> ≤ R ≤ 10 <sup>7</sup> Ω |
| Weight       | 35kg/roll                               | 35kg/roll                               |
| Material     | NBR+SBR                                 | NBR+SBR                                 |

**Warning** ●For safety purposes, read the instruction manual carefully before using the unit. ●Do not use this product in an explosion-proof area. ●A high voltage is applied on this product. Make sure that water, oil, solvents, etc., do not come in contact. ●Avoid dew condensation as it can result in electric shock or product damage. ●Keep away metal objects such as tools or needles, or body parts such as fingers, hands or face from the needle electrode because a high voltage is applied on the needle electrode.

Manufactured by

**VESSEL CO., INC.**

17-25, Fukae-Kita 2-chome,  
Higashinari-ku, Osaka 537-0001 Japan  
Tel : +81 6 6976 7778 Fax : +81 6 6972 9441  
E-mail : export@vessel.co.jp  
URL : http://www.vessel.co.jp/english/

●For improvements, the product specifications, size, price and other information may be subject to change without prior notice.

Distributed by

Printed in Japan

14120100.00